

STRALCIO PPTR PUGLIA (1:7500)

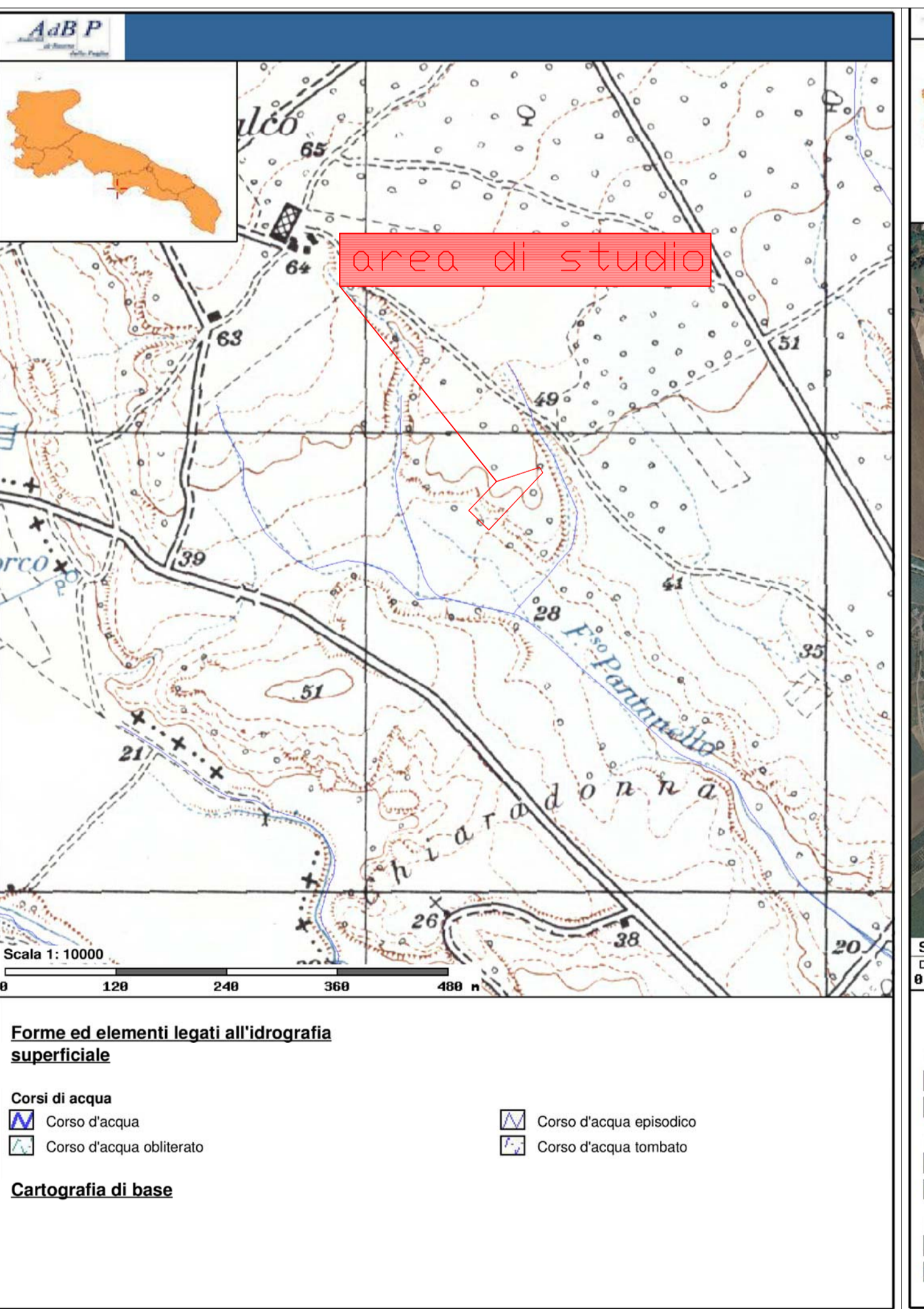
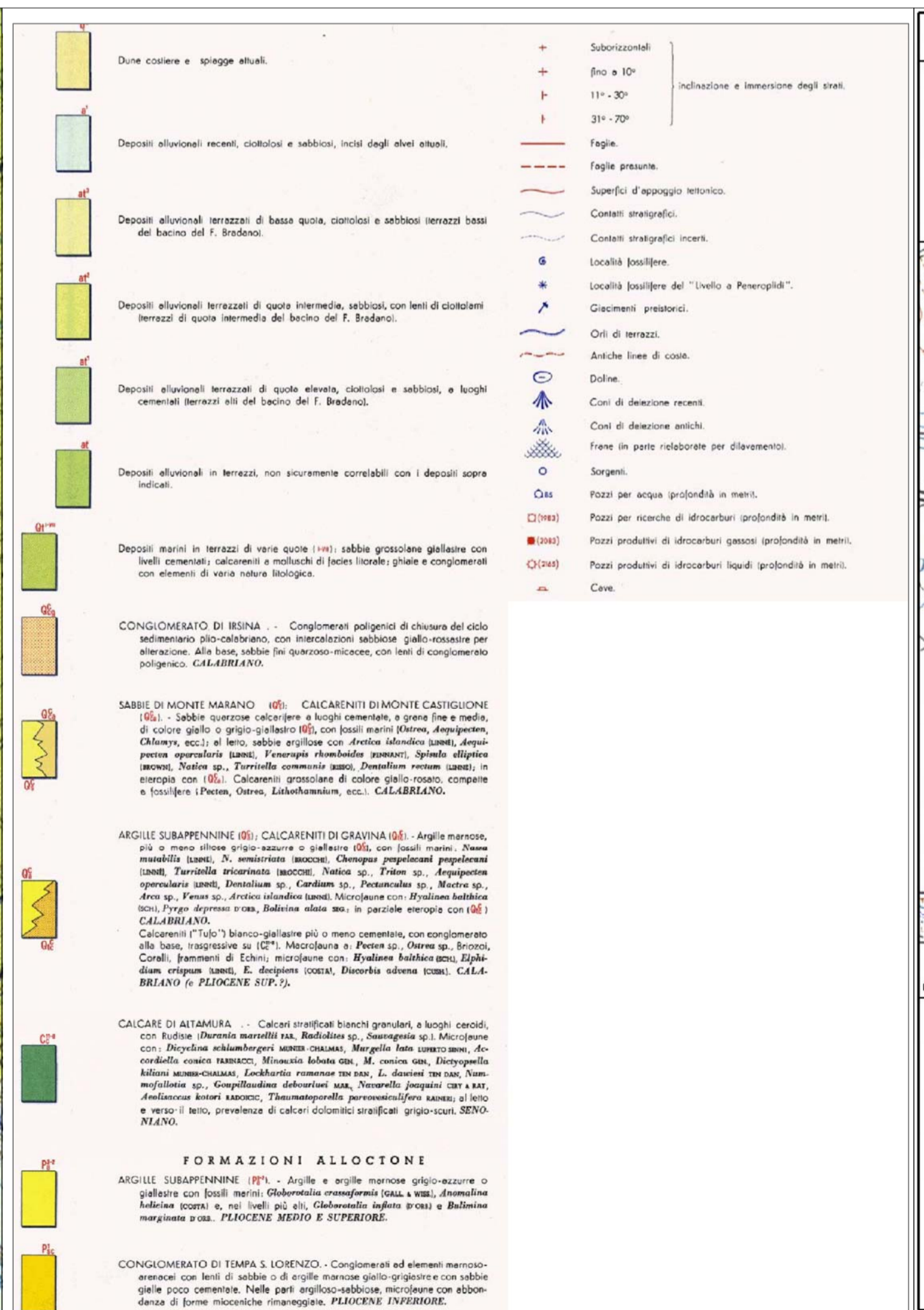
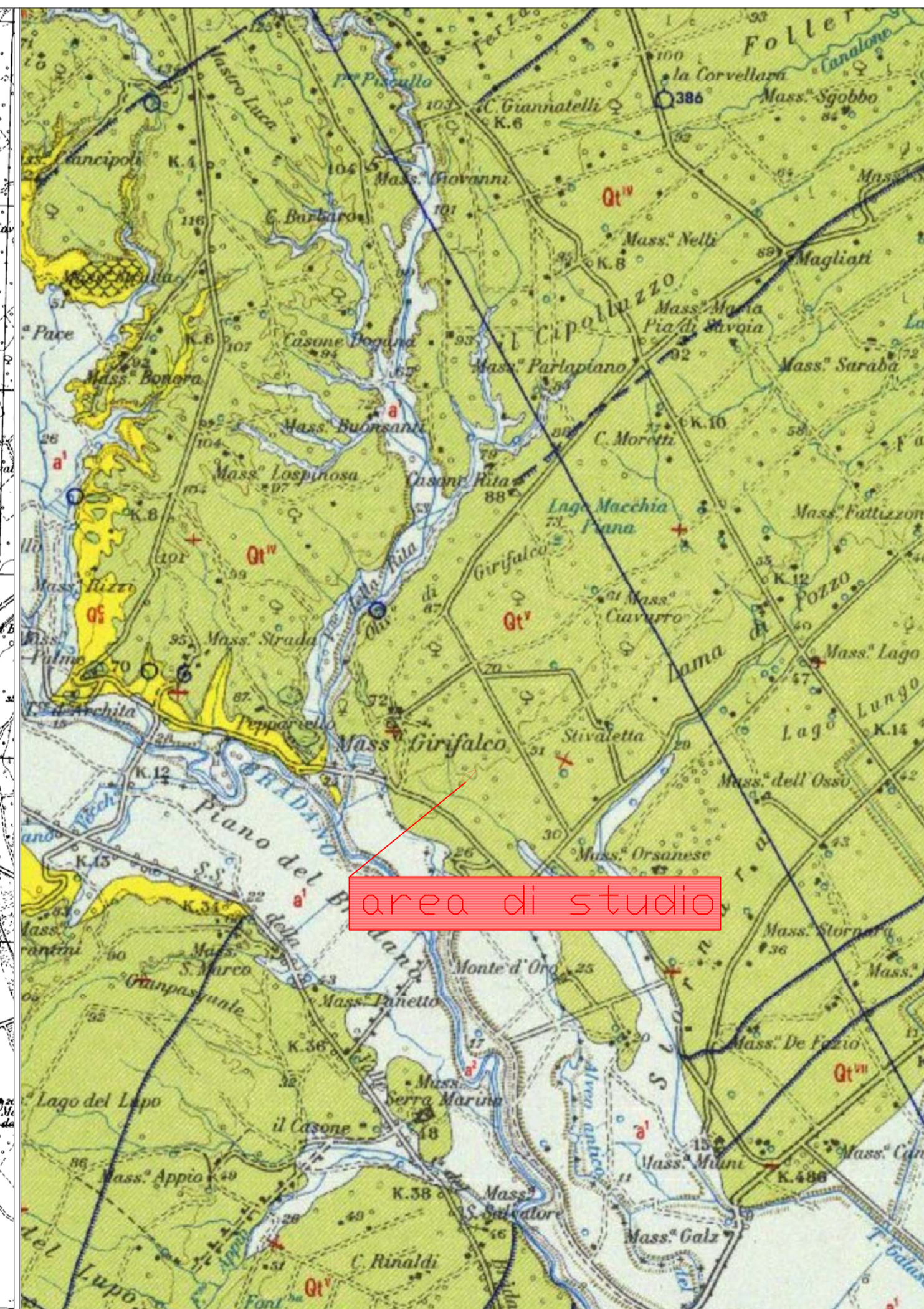
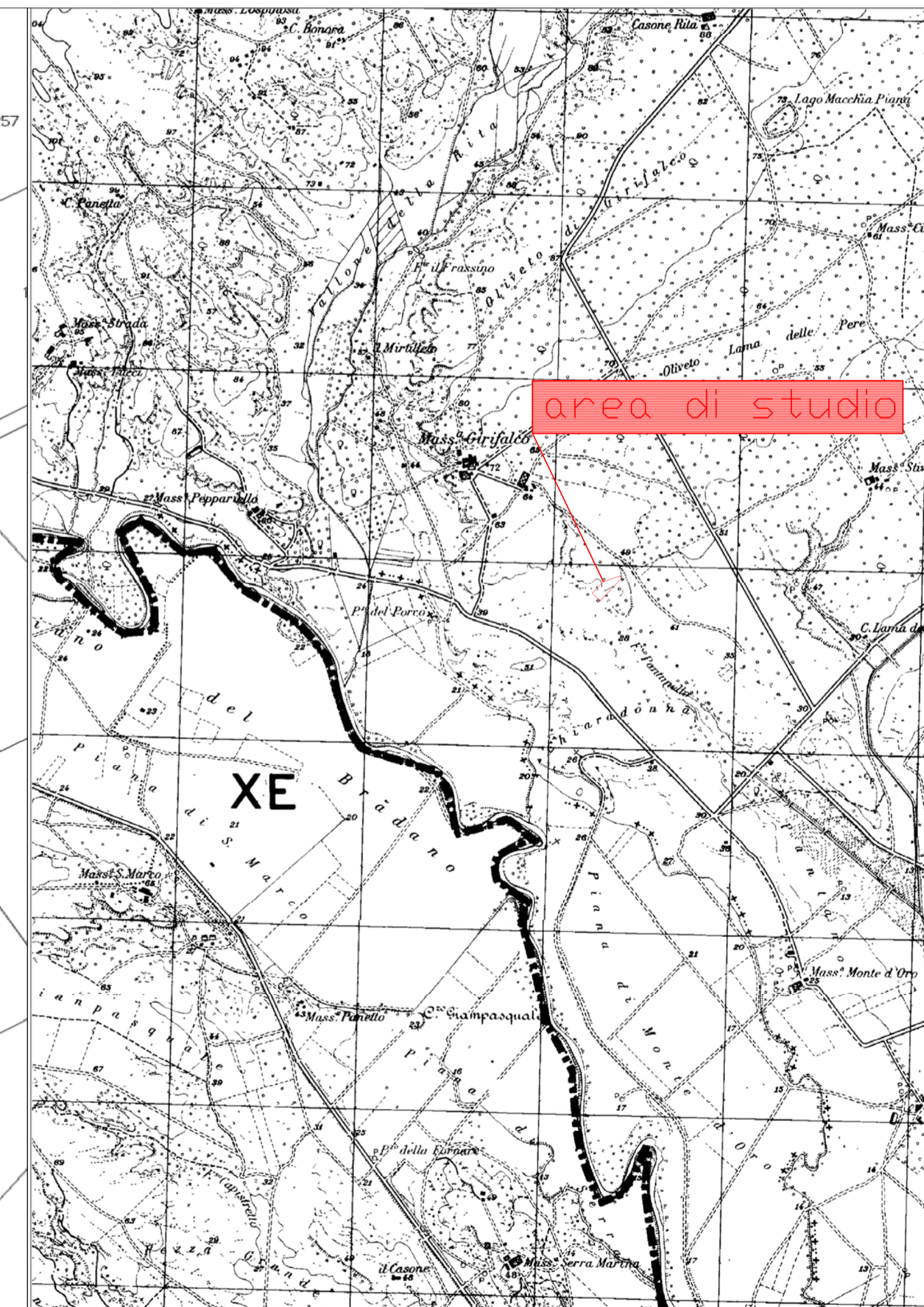
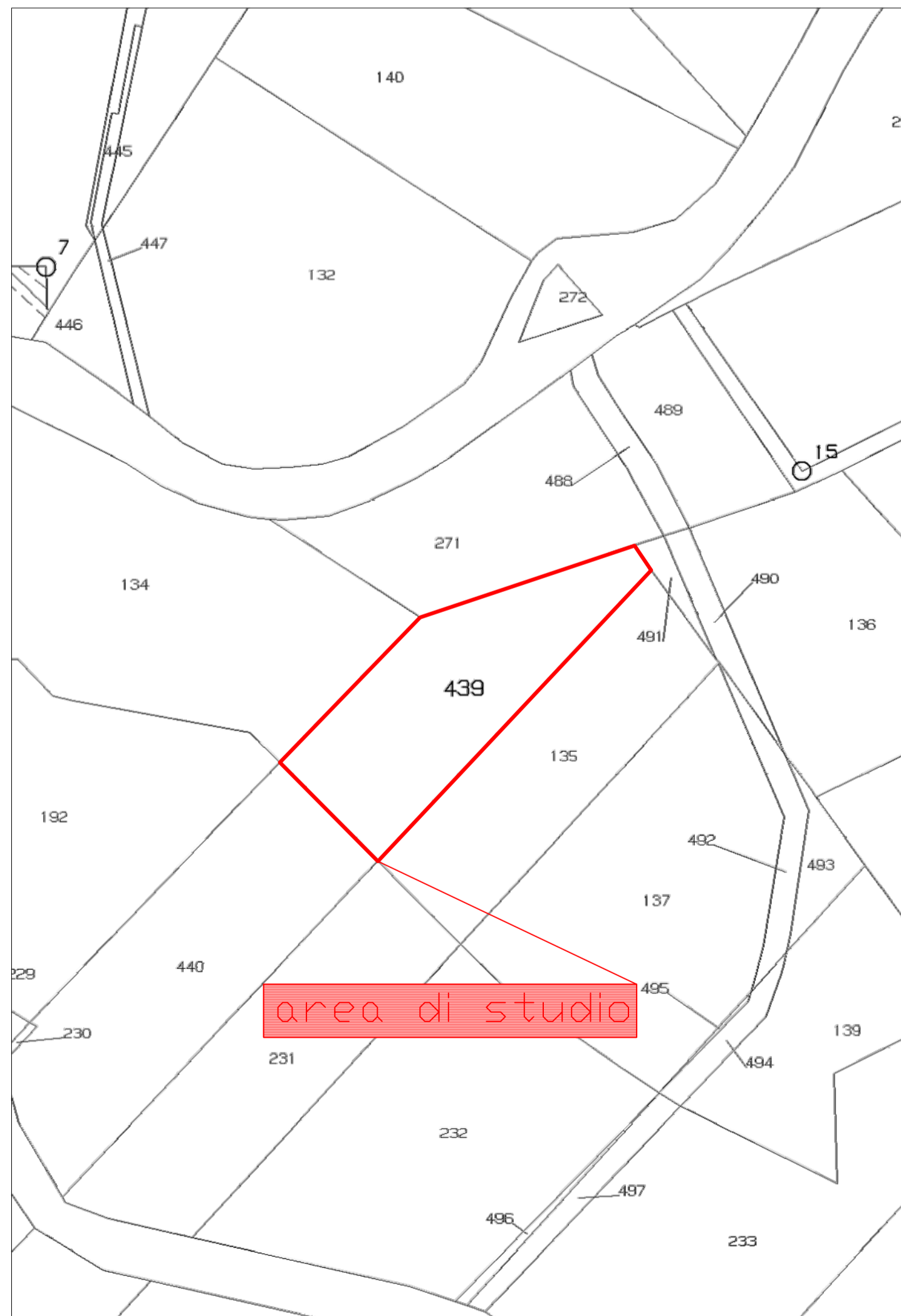
STRALCIO PPTR PUGLIA (1:7500)

STRALCIO PPTR PUGLIA (1:7500)

STRALCIO PPTR PUGLIA (1:7500)

STRALCIO PPTR PUGLIA (1:7500)

STRALCIO PPTR PUGLIA (1:7500)



STRALCIO CATASTALE (1:2000)

STRALCIO TAVOLETTA IGM (1:25000)

STRALCIO CARTA GEOLOGICA (1:50000)

LEGENDA GEOLOGICA

STRALCIO CARTOGRAFIA P.A.I.(1:10000)

STRALCIO CARTOGRAFIA P.A.I.(1:10000)

**STUDIO di GEOLOGIA
IDROGEOLOGIA e GEOLOGIA-TECNICA**
Dott. Antonio Tramonte
Studiuvia P. Togliatti n. 4 - 74016 Massafra (TA) - tel: 099 880709 - cell: 349 6103296

COMUNE: GINOSA (TA) **LOCALITA':** GIRIFALCO

PROGETTO: NUOVA CAVA DI SABBIA E GHIAIA

DESCRIZIONE: INQUADRAMENTO TERRITORIALE

SCALA: VARIE **DATA:** 14/03/2016 **TAVOLA:** 1

COMMITTENTE: ICB S.r.l. **PROGETTISTA:** dott. geol. Antonio Tramonte

